

moda  
PRESENTS



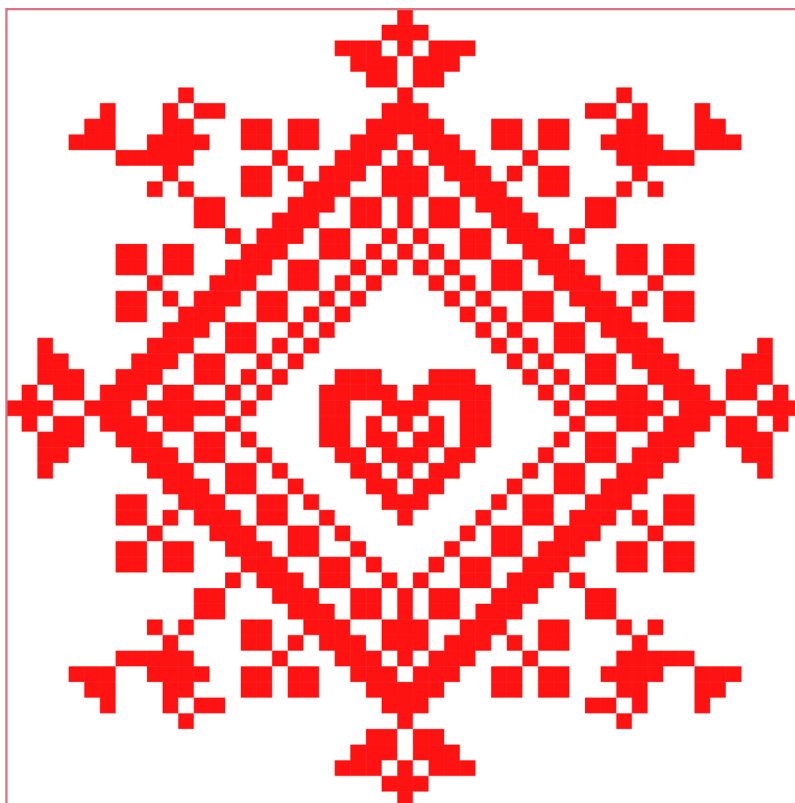
Cross Stitch Block  
Stamped Heart  
by Susan Ache


## Supplies

Symbol	Thread Number	Strands	Cloth	Design Size
■	Aurifloss 2423	2	30 count dark linen	63w x 63h

## Assembly

1. Center and stitch design, using two strands of floss for the entire pattern. Please refer to the table above for the proper thread color.



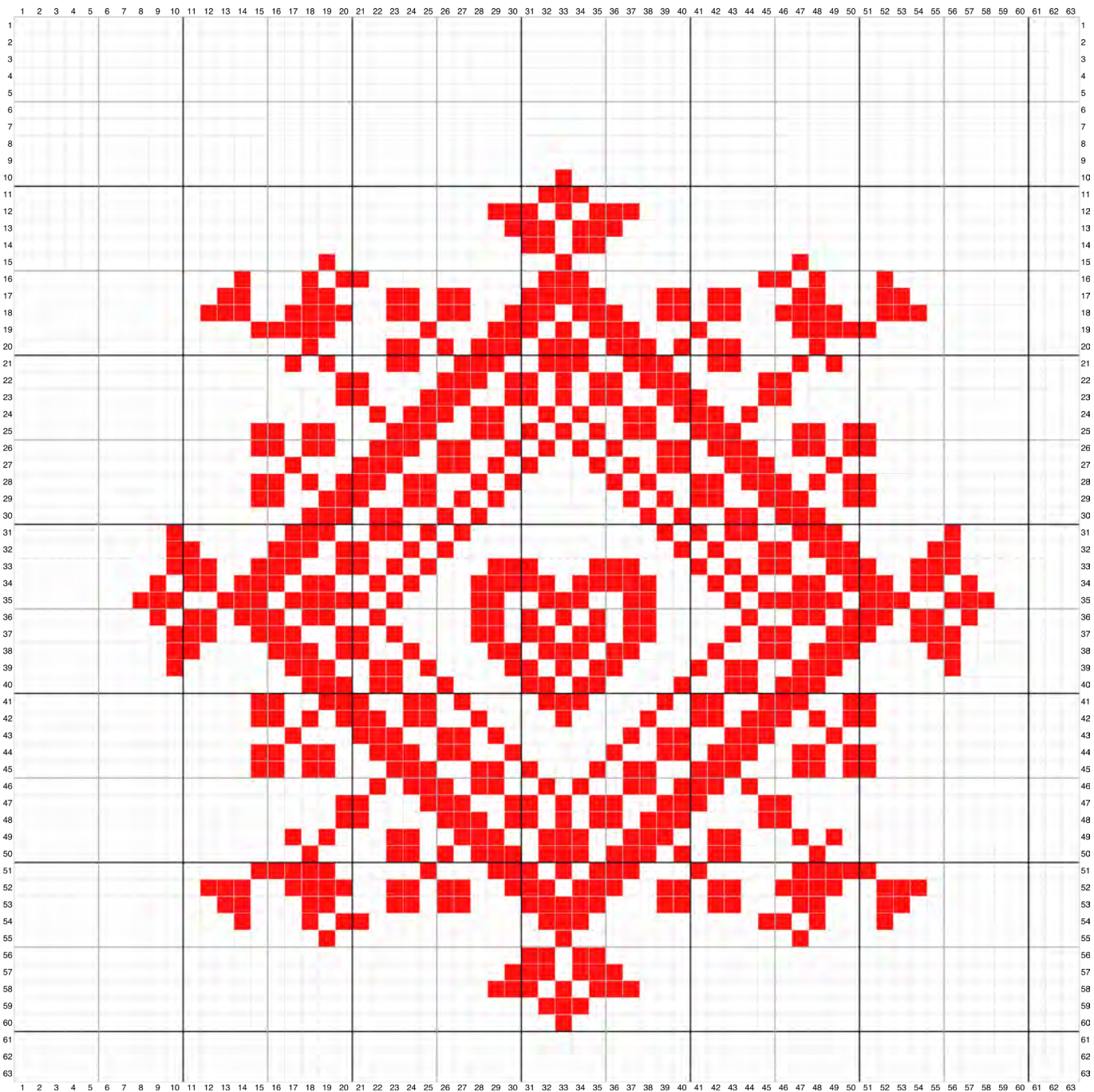
Symbol	Thread Number	Strands	Cloth	Design Size
	Aurifloss 2423	2	30 count dark linen	63w x 63h



Cross Stitch Block  
Stamped Heart

For more from Susan Ache, visit:

 [INSTAGRAM.COM/YARDGRL60](https://www.instagram.com/YARDGRL60)



Be sure to share your block and progress online!

#ModaStitchPink



 [modafabrics.com](http://modafabrics.com)

 [@modafabrics](https://www.instagram.com/modafabrics)

 [pinterest.com/modafabrics](https://www.pinterest.com/modafabrics)

