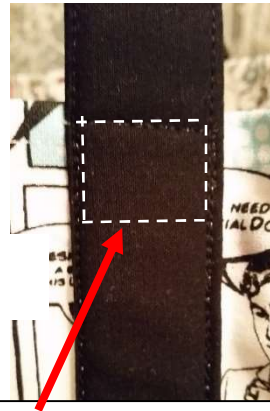




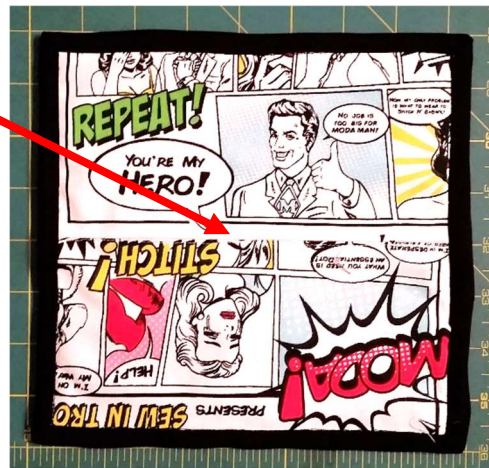
Fold, press & then stitch tote's top hem *BEFORE* you finish stitching the handles to the outside of the tote



Fold pattern on this line

Reinforce handles at top outside edge of tote by stitching an 'X' or a square

The 2 outside wallet rectangles are stitched RST together along the 8" edge.  
Arrange the pieces so the print is facing the way you prefer, before stitching this seam.



outside of wallet



Inside of wallet

- Folded edge of small pocket
- Folded edge of middle pocket (Moda Bella Super Black Solid)
- Folded edge of large pocket  
Stack all pressed pocket pieces (3 on each side) keeping folded edges straight, baste around edges, then bind.

# SUPER HEROES ON THE GO

Tote & Simple Wallet Pattern  
from  
RockingChairQuilts.com



### TOTE MATERIALS:

- 2/3 yard MODA® Super Heroes canvas weight fabric for tote
- 1/3 yard Moda Bella Super Black Solid for handles
- 1/8 yard 44" wide Décor Bond (optional handle reinforcement)
- Matching Aurifil thread
- Optional: 12"x 8 1/2" cardboard for bottom

### SIMPLE WALLET MATERIALS

- 1/3 yard Super Heroes canvas fabric
- 1/4 yard\* Moda Bella Super Black Solid for binding *\*more is needed for bias binding.*
- 8" square Décor Bond (optional)
- Matching Aurifil thread

## **TOTE CUTTING:**

Tote Fabric • CUT two pieces 16"x12 ½" for front and back • CUT two piece 9" x 22" rectangles for sides and bottom

Handle fabric cut two pieces 5" x 44" for handles. • optional - If you want your handles stronger reinforce with Décor Bond – cut 2 pieces 1 1/4" x 44"

**ASSEMBLY:** Fold handle pieces in half lengthwise and press. Open and fold edges in to middle. Refold and press. Open handle fabric back out and Place cut strip of Décor Bond with one edge along center pressed line in fabric. Press Décor Bond in place, refold edges of handle fabric back to middle enclosing the strip of Décor bond inside the handle fabric. Baste with matching thread along open edges of handle (basting can be optional). Place inside edge of handle 3" in from each edge of front. Top stitch both sides of handle but STOP stitching about 5" from the top. Repeat with back piece.

Reinforce bottom corners of tote front and back with stay stitching ¼" from tote edge and clip corners to stay stitching.

Put the two 9" x 22" side/bottom pieces right sides together, making sure the images will be facing upright on both sides of your bag, then sew (or serge) them together with 1/4" seam along the bottom 9" edge. (bottom center seam) piece should now measure 9" x 43 ½".

Pin then Using 1/4" seam, stitch front to side/bottom, clipping seam allowance to stay stitching where needed and pivoting at corners. Repeat with back piece. Press seams toward sides. Optional: seams can then be finished with zigzag stitching or serging. Be careful to keep handles free.

Fold down 1 ½" all along top edge of tote and press. Now turn raw edge under ¼" and press. Pin in place if needed Then stitch top hem in place keeping handles free. Now where you had left the top 5" of the handles free from the bag- it is time to stitch those down. SO Continue top stitching handles to tote and along handle edges over basting, reinforcing by stitching an X at top edge of tote.

Optional: Cover cardboard rectangle with fabric and place in bottom of tote. Sometimes instead of cardboard I cut my tote rectangles out of old rotary cutting mats that have gotten too cut up to use for anything else.

## **SIMPLE WALLET CUTTING:**

• Cut 2 rectangles 8" x 4 ¼" canvas (outside) \*NOTE: because your outside wallet fabric is directional you will cut 2 rectangles 8" x 4 ¼" then pivot one of the rectangles 180 degrees . See photo on pattern back. Now stitch the two 8 x 4 ¼" rectangles (right sides together) along the 8" edge'. This stitched piece should now measure 8" x 8". This is done so that the directional print of your SUPER HEROES fabric will be going in the right direction when you look at the outside of your wallet. If you don't mind where your superheroes are headed you can just cut one 8" x 8" square for the outside piece of your wallet.

•Cut one 8" square\* canvas (inside)

### **POCKETS**

- from SUPERHEROES CANVAS Cut two 8"x7" (large pockets) • Cut two 8"x4" (smallest pockets)
- from Moda Bella Solid cut two 8"x5½" (middle pockets)

**BINDING FABRIC:** from Moda Bella Solid Cut one 1½"x34" (binding). If you want to cut your binding fabric on the bias you will need more fabric than the 1/8 yard as listed on front of pattern

**ASSEMBLY:** Fold all pieces for pockets in half lengthwise and press. Place optional square of Décor Bond between 8" wallet fabric inside and outside squares wrong sides together, with inside wallet fabric facing up. Beginning with largest pocket, place on inside aligning edges and bottom on top and bottom of wallet. Continue with each pocket. Baste around all edges. Catching in all layers

Fold 1½"x34" BINDING piece in half lengthwise and press. Open and fold edges to middle. Refold and press.

Stitch to edge of basted edge of simple wallet, pivoting/mitering at corners so they lay nicely.

Thanks so much to Angie Young for making the shop sample for us!